

# MONTHLY MEMBERSHIP PROGRESS REPORT

District 119

Results as of: 2/29/2024

GMT:

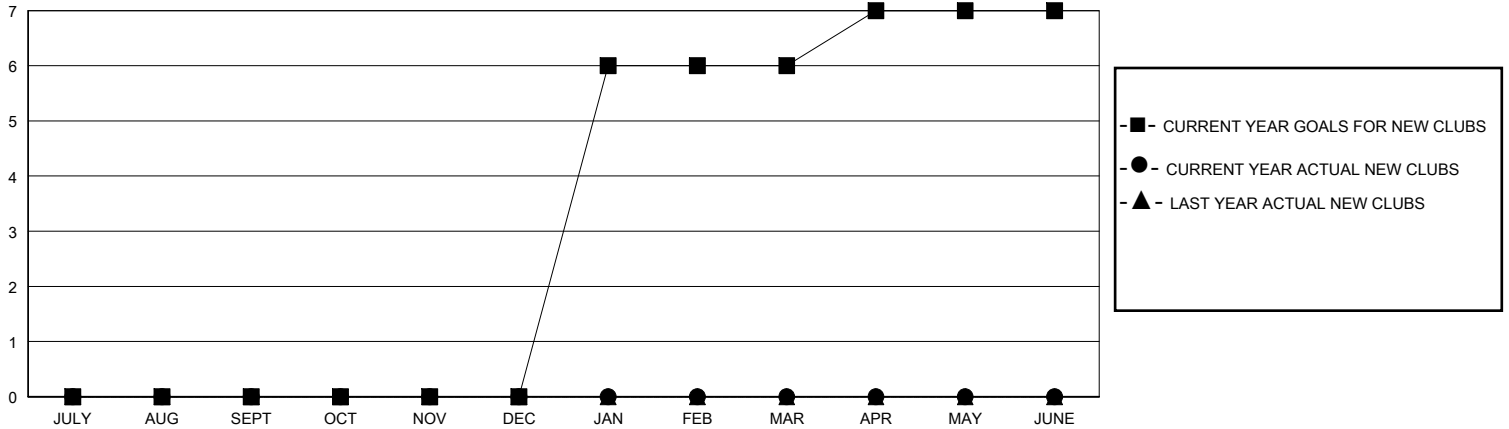
LOCATION HUNGARY

GMT CA

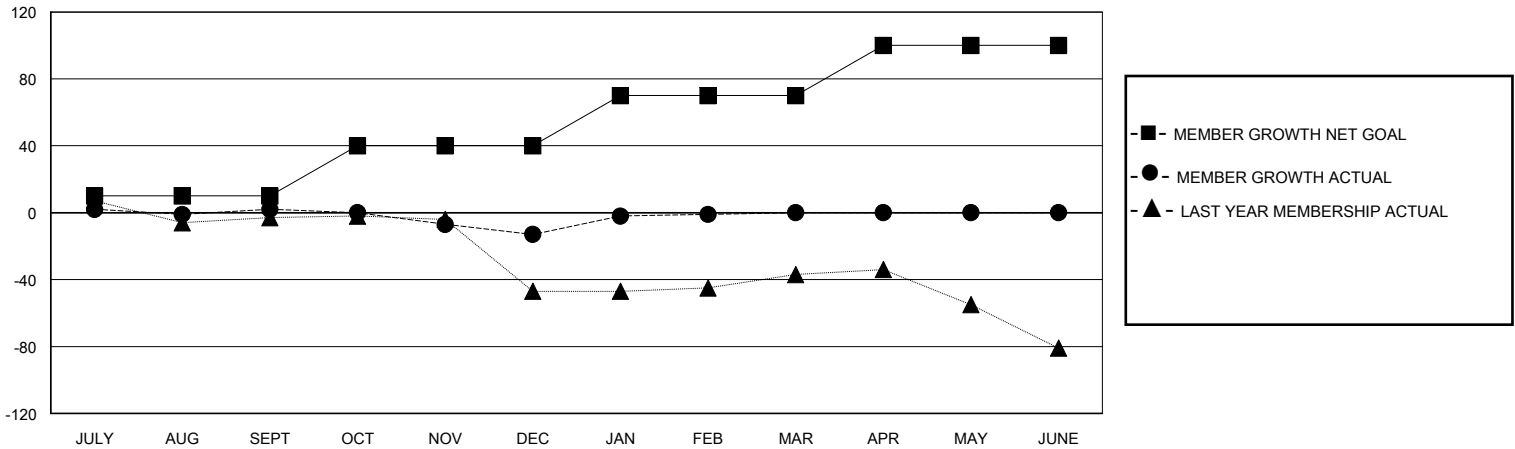
Clubs			
RESULTS FOR 2023-2024			
QUARTER	NEW CLUB GOAL	NEW CLUBS	DROPPED CLUBS
JULY/AUG/SEPT	0	0	0
OCT/NOV/DEC	0	0	0
JAN/FEB/MAR	6	0	0
APR/MAY/JUNE	1	0	0

Members			
RESULTS FOR 2023-2024			
QUARTER	MEMBER GROWTH NET GOAL	MEMBER GROWTH ACTUAL	DROPPED MEMBERS ACTUAL (including transfers)
JULY/AUG/SEPT	10	15	13
OCT/NOV/DEC	30	8	22
JAN/FEB/MAR	30	27	15
APR/MAY/JUNE	30	0	0

GOALS AND ACTUAL NEW CLUBS CUMULATIVE



GOALS AND ACTUAL MEMBERS CUMULATIVE



DROPPED CLUBS: 0	14 CLUBS OF 38 ADDED 1 OR MORE NEW MEMBERS	<b>GENDER DISTRIBUTION</b> MALE 467 (57.94%) FEMALE 339 (42.06%)
<b>DROPPED MEMBERS</b> DECEASED 4 CLUB CANCELLED 0 OTHER 46 TOTAL 50	<a href="#">CLICK HERE FOR CUMULATIVE MEMBERSHIP DATA</a>	TOTAL FAMILY UNIT MEMBERS 158 FAMILY MEMBERS PAYING HALF DUES 80